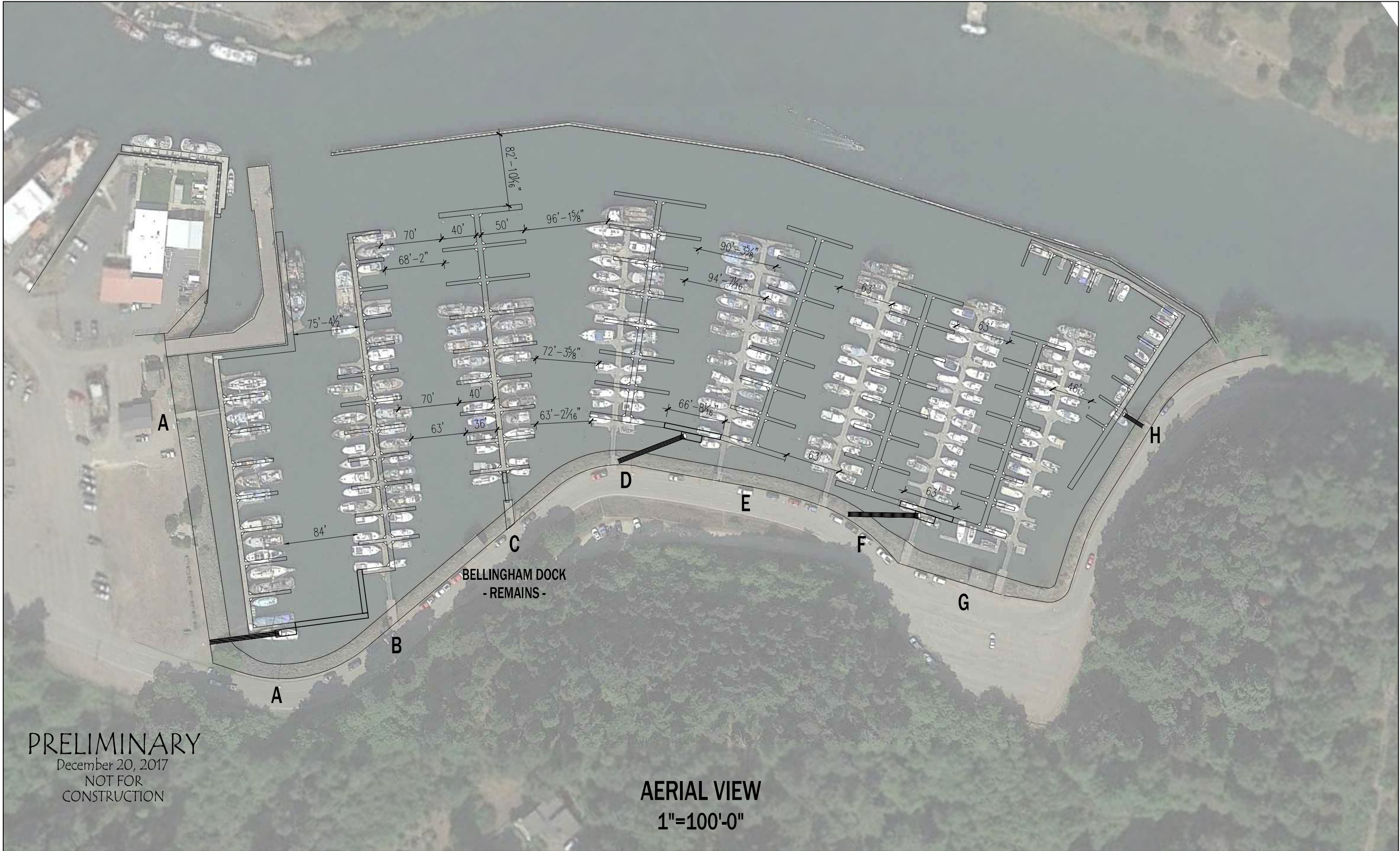


\\AMIFS\Drafting_files\ARCHIVE\8300\8357AA -Noyo Harbor\8357AA-SITE.dwg, 100, 12/20/2017 4:49:17 PM, MShrader



NO.	REVISION DESCRIPTION	BY	DATE	Note: This document contains proprietary information of MS-TMC, . Its receipt or possession does not convey any rights to reproduce, disclose its contents, or to manufacture, use, or sell anything it may describe. Reproduction, disclosure, or use, without specific written authorization is strictly forbidden.	<div><div>1501 E. ELECTRIC AVE. McALESTER, OKLAHOMA, USA 74501</div><div>Phone: (918) 423-6833 Fax: (918) 423-3215</div></div>	DRAWN BY: W.M.S.		FILE NAME: 8357AA-SITE		NOYO HARBOR MARINA NOYO, CA	
						CHECKED BY:		JOB #	PLAN # 8357AA		
						SCALE: 1"=100'-0"		DATE: 12/20/17	SHEET 100		

\\AMIFS\Drafting_files\ARCHIVE\8300\8357AA -Noyo Harbor\8357AA-SITE.dwg, 100 (2), 12/20/2017 4:49:24 PM, MShrader

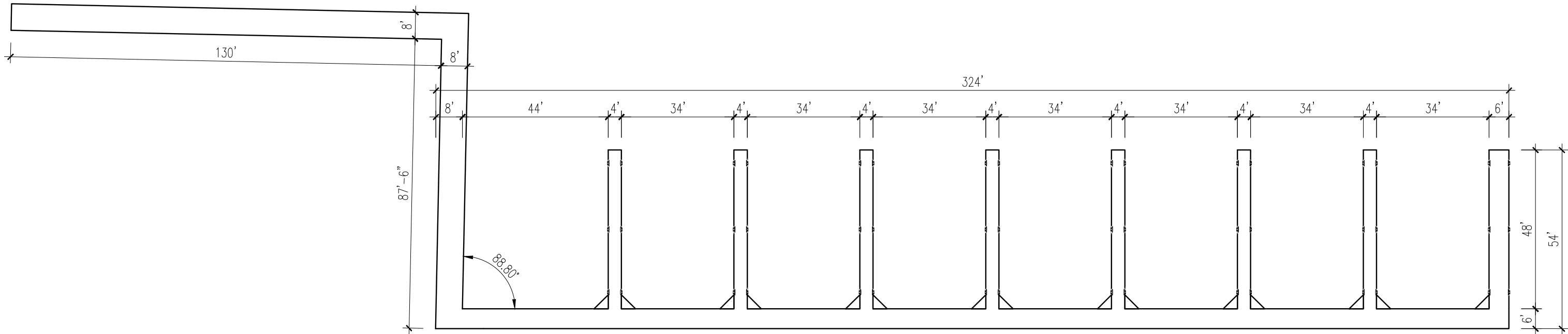


PRELIMINARY
December 20, 2017
NOT FOR
CONSTRUCTION

AERIAL VIEW
1"=100'-0"

NO.	REVISION DESCRIPTION	BY	DATE	<div>Note: This document contains proprietary information of MS-TMC, . Its receipt or possession does not convey any rights to reproduce, disclose its contents, or to manufacture, use, or sell anything it may describe. Reproduction, disclosure, or use, without specific written authorization is strictly forbidden.</div> <div><div><div></div><div><div>MEECO SULLIVAN</div><div>THE MARINA COMPANY</div></div></div><div><div>1501 E. ELECTRIC AVE.</div><div>McALESTER, OKLAHOMA, USA 74501</div></div><div><div>Phone: (918) 423-6833</div><div>Fax: (918) 423-3215</div></div></div>	DRAWN BY: W.M.S.	FILE NAME: 8357AA-SITE		<div>NOYO HARBOR MARINA</div> <div>NOYO, CA</div>
					CHECKED BY:	JOB #	PLAN # 8357AA	
					SCALE: 1"=100'-0"	DATE: 12/20/17	SHEET 100 (2)	

\\AMIFS\Drafting_files\ARCHIVE\8300\8357AA -Noyo Harbor\8357AA-ALLDocks.dwg, A, 12/20/2017 4:49:35 PM, MShrader

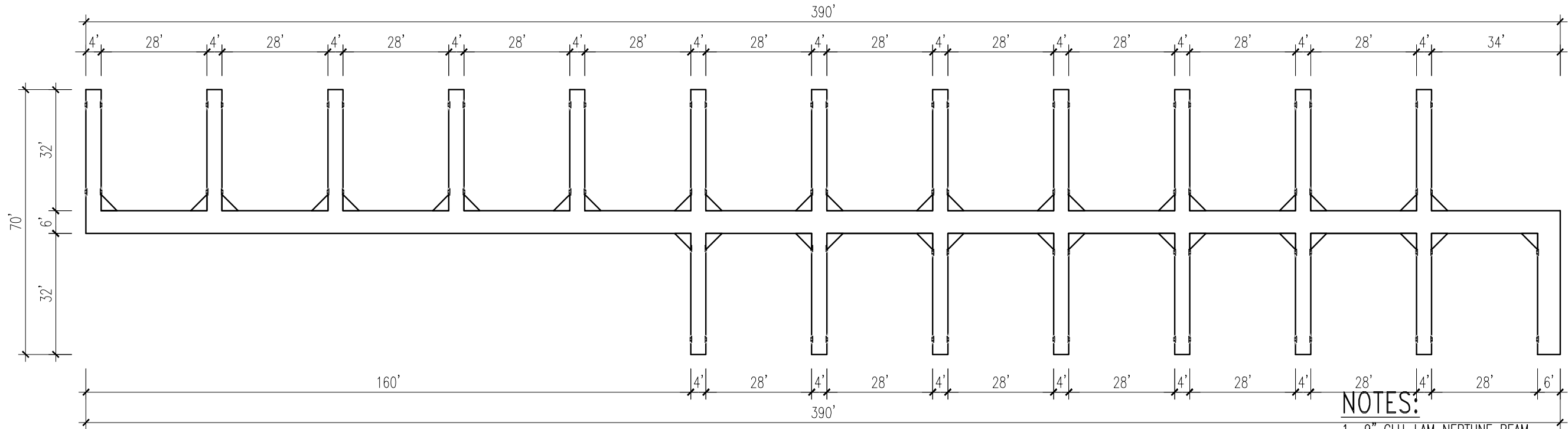


PLAN VIEW - DOCK A
(16) 48' x 17' OPEN SLIPS

- NOTES:**
- 9" GLU-LAM NEPTUNE BEAM.
 - POLYETHYLENE FLOAT WITH POLYSTYRENE FLOTATION MOLDED INSIDE. (NOMINAL .150" WALL)
 - PILE ANCHORAGE - PILES BY OTHERS, BRACKETS BY MEECO SULLIVAN.
 - ALL STEEL COMPONENTS TO BE HOT-DIP GALVANIZED AFTER FABRICATION.
 - DECKING
HEADPIERS & FINGERS:
GREY CONCRETE DECK PANELS WITH EMBOSSED FINISH.
CORNERWALKS:
2"x6" TREATED SOUTHERN YELLOW PINE.
2"x6" COMPOSITE DECKING.
 - SINGLE ROW 2"x6" TREATED SYP SIDEWOOD PERIMETER.
 - #5001 VINYL BUMPER PERIMETER OF DOCK. (BLACK)
 - 10" GALVANIZED DECK CLEATS ON SLIPS UNDER 50'.
12" GALVANIZED DECK CLEATS ON SLIPS 50'+.
 - TOE RAILS - 2"x8" SIDEWOOD INSTALLED WITH TOP EDGE 2" ABOVE DECK LEVEL.
 - TOE RAILS - DOUBLE 2"x6" COMPOSITE DECK BOARDS.
 - DECK FLOTATION LIVELOAD - ~30 P.S.F.

NO.	REVISION DESCRIPTION	BY	DATE	<div>Note: This document contains proprietary information of MS-TMC, . Its receipt or possession does not convey any rights to reproduce, disclose its contents, or to manufacture, use, or sell anything it may describe. Reproduction, disclosure, or use, without specific written authorization is strictly forbidden.</div> <div><div><div><div><div>MEECO SULLIVAN</div><div>THE MARINA COMPANY</div></div><div><div>1501 E. ELECTRIC AVE. McALESTER, OKLAHOMA, USA 74501</div><div><div>Phone: (918) 423-6833</div><div>Fax: (918) 423-3215</div></div></div></div></div></div>	DRAWN BY: W.M.S.	FILE NAME: 8357AA-ALLDocks	
					CHECKED BY:	JOB #	PLAN # 8357AA
					SCALE: 1"=30'-0"	DATE: 12/20/17	SHEET A
					<div>NOYO HARBOR MARINA</div> <div>NOYO, CA</div>		

\\AMIFS\Drafting_files\ARCHIVE\8300\8357AA -Noyo Harbor\8357AA-ALLDocks.dwg, B, 12/20/2017 4:49:37 PM, MShrader

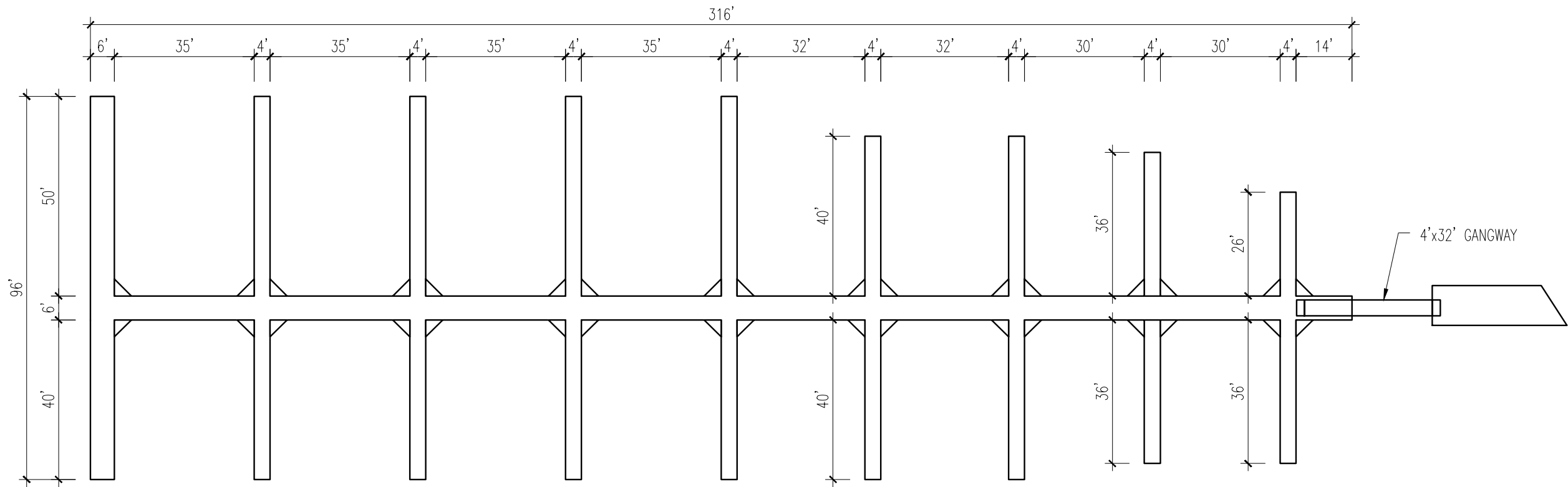


- NOTES:**
1. 9" GLU-LAM NEPTUNE BEAM.
 2. POLYETHYLENE FLOAT WITH POLYSTYRENE FLOTATION MOLDED INSIDE. (NOMINAL .150" WALL)
 3. PILE ANCHORAGE - PILES BY OTHERS, BRACKETS BY MEECO SULLIVAN.
 4. ALL STEEL COMPONENTS TO BE HOT-DIP GALVANIZED AFTER FABRICATION.
 5. DECKING
HEADPIERS & FINGERS:
GREY CONCRETE DECK PANELS WITH EMBOSSED FINISH.
CORNERWALKS:
2"x6" TREATED SOUTHERN YELLOW PINE.
2"x6" COMPOSITE DECKING.
 6. SINGLE ROW 2"x6" TREATED SYP SIDEWOOD PERIMETER.
 7. #5001 VINYL BUMPER PERIMETER OF DOCK. (BLACK)
 8. 10" GALVANIZED DECK CLEATS ON SLIPS UNDER 50'.
12" GALVANIZED DECK CLEATS ON SLIPS 50'+.
 9. TOE RAILS - 2"x8" SIDEWOOD INSTALLED WITH TOP EDGE 2" ABOVE DECK LEVEL.
 9. TOE RAILS - DOUBLE 2"x6" COMPOSITE DECK BOARDS.
 10. DECK FLOTATION LIVELOAD - ~30 P.S.F.

PLAN VIEW - DOCK B
(38) 32' x 14' OPEN SLIPS

NO.	REVISION DESCRIPTION	BY	DATE	<div>Note: This document contains proprietary information of MS-TMC, . Its receipt or possession does not convey any rights to reproduce, disclose its contents, or to manufacture, use, or sell anything it may describe. Reproduction, disclosure, or use, without specific written authorization is strictly forbidden.</div> <div><div><div><div>MEECO SULLIVAN</div><div>THE MARINA COMPANY</div></div><div><div>1501 E. ELECTRIC AVE. McALESTER, OKLAHOMA, USA 74501</div><div><div>Phone: (918) 423-6833</div><div>Fax: (918) 423-3215</div></div></div></div><div><div>DRAWN BY: W.M.S.</div><div>CHECKED BY:</div><div>SCALE: 1"=30'-0"</div></div><div><div>FILE NAME: 8357AA-ALLDocks</div><div>JOB #</div><div>DATE: 12/20/17</div></div><div><div>PLAN # 8357AA</div><div>SHEET B</div></div></div>

NOYO HARBOR MARINA
NOYO, CA



EXISTING DOCK C
BY BELLINGHAM

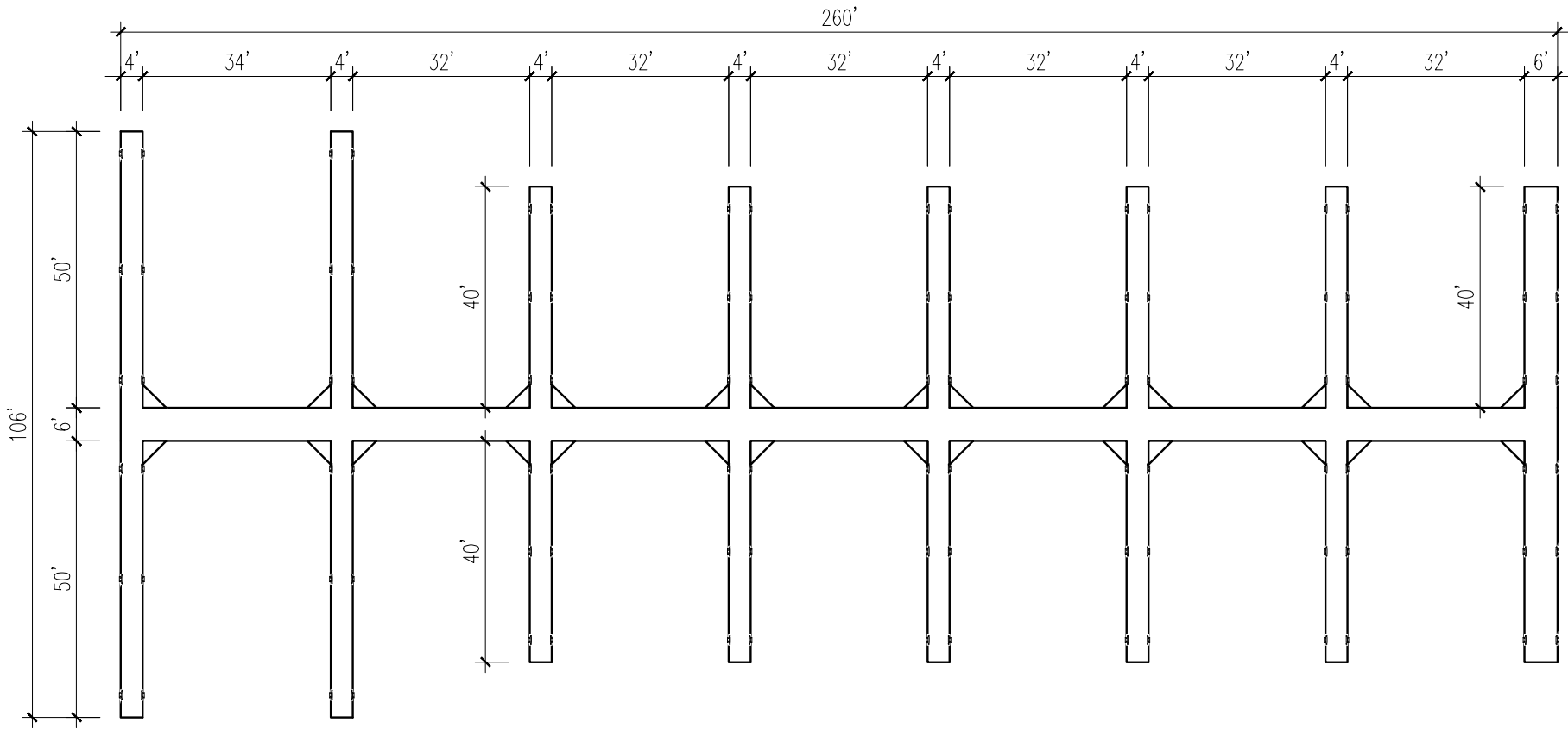
DOCK TO REMAIN IN PLACE

NOTES:

1. 9" GLU-LAM NEPTUNE BEAM.
2. POLYETHYLENE FLOAT WITH POLYSTYRENE FLOTATION MOLDED INSIDE. (NOMINAL .150" WALL)
3. PILE ANCHORAGE - PILES BY OTHERS, BRACKETS BY MEECO SULLIVAN.
4. ALL STEEL COMPONENTS TO BE HOT-DIP GALVANIZED AFTER FABRICATION.
5. DECKING
HEADPIERS & FINGERS:
GREY CONCRETE DECK PANELS WITH EMBOSSED FINISH.
CORNERWALKS:
2"x6" TREATED SOUTHERN YELLOW PINE.
2"x6" COMPOSITE DECKING.
6. SINGLE ROW 2"x6" TREATED SYP SIDWOOD PERIMETER.
7. #5001 VINYL BUMPER PERIMETER OF DOCK. (BLACK)
8. 10" GALVANIZED DECK CLEATS ON SLIPS UNDER 50'.
12" GALVANIZED DECK CLEATS ON SLIPS 50'+.
9. TOE RAILS - 2"x8" SIDWOOD INSTALLED WITH TOP EDGE 2" ABOVE DECK LEVEL.
9. TOE RAILS - DOUBLE 2"x6" COMPOSITE DECK BOARDS.
10. DECK FLOTATION LIVELOAD - ~30 P.S.F.

NO.	REVISION DESCRIPTION	BY	DATE	<div>Note: This document contains proprietary information of MS-TMC, . Its receipt or possession does not convey any rights to reproduce, disclose its contents, or to manufacture, use, or sell anything it may describe. Reproduction, disclosure, or use, without specific written authorization is strictly forbidden.</div> <div><div><div><div>MEECO SULLIVAN</div><div>THE MARINA COMPANY</div></div><div><div>1501 E. ELECTRIC AVE. McALESTER, OKLAHOMA, USA 74501</div><div><div>Phone: (918) 423-6833</div><div>Fax: (918) 423-3215</div></div></div></div><div><div>DRAWN BY: W.M.S.</div><div>CHECKED BY:</div><div>SCALE: 1"=30'-0"</div></div><div><div>FILE NAME: 8357AA-ALLDocks</div><div>JOB #</div><div>DATE: 12/20/17</div></div><div><div>PLAN # 8357AA</div><div>SHEET C-REMAINS</div></div></div>
				<div>NOYO HARBOR MARINA</div> <div>NOYO, CA</div>

\\AMIFS\Drafting_files\ARCHIVE\8300\8357AA -Noyo Harbor\8357AA-ALLDocks.dwg, D, 12/20/2017 4:49:40 PM, MShrader

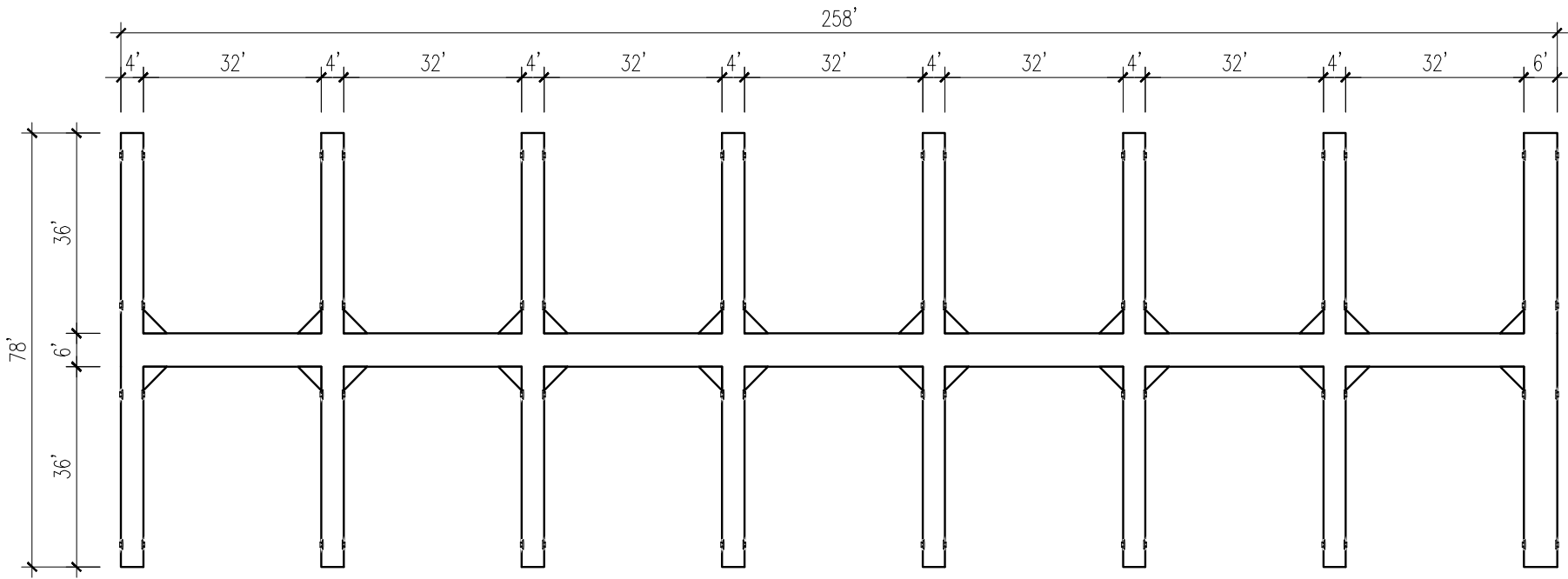


PLAN VIEW - DOCK D
(6) 50' x 17' OPEN SLIPS
(22) 40'x16' OPEN SLIPS

- NOTES:**
- 9" GLU-LAM NEPTUNE BEAM.
 - POLYETHYLENE FLOAT WITH POLYSTYRENE FLOTATION MOLDED INSIDE. (NOMINAL .150" WALL)
 - PILE ANCHORAGE - PILES BY OTHERS, BRACKETS BY MEECO SULLIVAN.
 - ALL STEEL COMPONENTS TO BE HOT-DIP GALVANIZED AFTER FABRICATION.
 - DECKING
HEADPIERS & FINGERS:
GREY CONCRETE DECK PANELS WITH EMBOSSED FINISH.
CORNERWALKS:
2"x6" TREATED SOUTHERN YELLOW PINE.
2"x6" COMPOSITE DECKING.
 - SINGLE ROW 2"x6" TREATED SYP SIDEWOOD PERIMETER.
 - #5001 VINYL BUMPER PERIMETER OF DOCK. (BLACK)
 - 10" GALVANIZED DECK CLEATS ON SLIPS UNDER 50'.
12" GALVANIZED DECK CLEATS ON SLIPS 50'+.
 - TOE RAILS - 2"x8" SIDEWOOD INSTALLED WITH TOP EDGE 2" ABOVE DECK LEVEL.
 - TOE RAILS - DOUBLE 2"x6" COMPOSITE DECK BOARDS.
 - DECK FLOTATION LIVELOAD - ~30 P.S.F.

NO.	REVISION DESCRIPTION	BY	DATE	<div>Note: This document contains proprietary information of MS-TMC, . Its receipt or possession does not convey any rights to reproduce, disclose its contents, or to manufacture, use, or sell anything it may describe. Reproduction, disclosure, or use, without specific written authorization is strictly forbidden.</div> <div><div><div><div><div>MEECO SULLIVAN</div><div>THE MARINA COMPANY</div></div><div><div>1501 E. ELECTRIC AVE. McALESTER, OKLAHOMA, USA 74501</div><div><div>Phone: (918) 423-6833</div><div>Fax: (918) 423-3215</div></div></div></div></div></div>	DRAWN BY: W.M.S.		FILE NAME: 8357AA-ALLDocks	
					CHECKED BY:		JOB #	PLAN # 8357AA
					SCALE: 1"=30'-0"		DATE: 12/20/17	SHEET D
					<div>NOYO HARBOR MARINA</div> <div>NOYO, CA</div>			

\\AMIFS\Drafting_files\ARCHIVE\8300\8357AA -Noyo Harbor\8357AA-ALLDocks.dwg, E, 12/20/2017 4:49:41 PM, MShrader



PLAN VIEW - DOCK E
(28) 40' x 16' OPEN SLIPS

NOTES:

1. 9" GLU-LAM NEPTUNE BEAM.
2. POLYETHYLENE FLOAT WITH POLYSTYRENE FLOTATION MOLDED INSIDE. (NOMINAL .150" WALL)
3. PILE ANCHORAGE - PILES BY OTHERS, BRACKETS BY MEECO SULLIVAN.
4. ALL STEEL COMPONENTS TO BE HOT-DIP GALVANIZED AFTER FABRICATION.
5. DECKING
HEADPIERS & FINGERS:
GREY CONCRETE DECK PANELS WITH EMBOSSED FINISH.
CORNERWALKS:
2"x6" TREATED SOUTHERN YELLOW PINE.
2"x6" COMPOSITE DECKING.
6. SINGLE ROW 2"x6" TREATED SYP SIDEWOOD PERIMETER.
7. #5001 VINYL BUMPER PERIMETER OF DOCK. (BLACK)
8. 10" GALVANIZED DECK CLEATS ON SLIPS UNDER 50'.
12" GALVANIZED DECK CLEATS ON SLIPS 50'+.
9. TOE RAILS - 2"x8" SIDEWOOD INSTALLED WITH TOP EDGE 2" ABOVE DECK LEVEL.
9. TOE RAILS - DOUBLE 2"x6" COMPOSITE DECK BOARDS.
10. DECK FLOTATION LIVELOAD - ~30 P.S.F.

NO.	REVISION DESCRIPTION	BY	DATE

Note: This document contains proprietary information of MS-TMC, . Its receipt or possession does not convey any rights to reproduce, disclose its contents, or to manufacture, use, or sell anything it may describe. Reproduction, disclosure, or use, without specific written authorization is strictly forbidden.



MEECO SULLIVAN
THE MARINA COMPANY

1501 E. ELECTRIC AVE.
McALESTER, OKLAHOMA, USA 74501

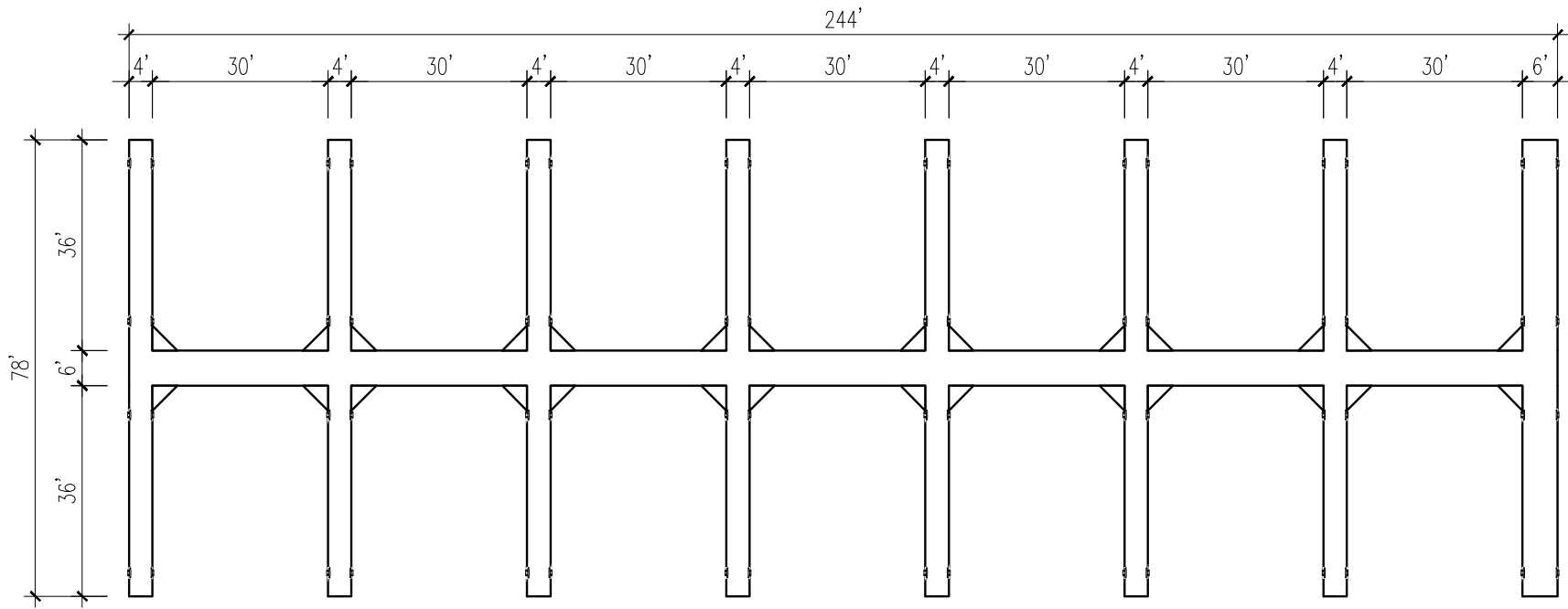
Phone: (918) 423-6833
Fax: (918) 423-3215

DRAWN BY: W.M.S.	FILE NAME: 8357AA-ALLDocks	
CHECKED BY:	JOB #	PLAN # 8357AA
SCALE: 1"=30'-0"	DATE: 12/20/17	SHEET E

NOYO HARBOR MARINA

NOYO, CA

\\AMIFS\Drafting_files\ARCHIVE\8300\8357AA -Noyo Harbor\8357AA-ALLDocks.dwg, F, 12/20/2017 4:49:42 PM, MShrader



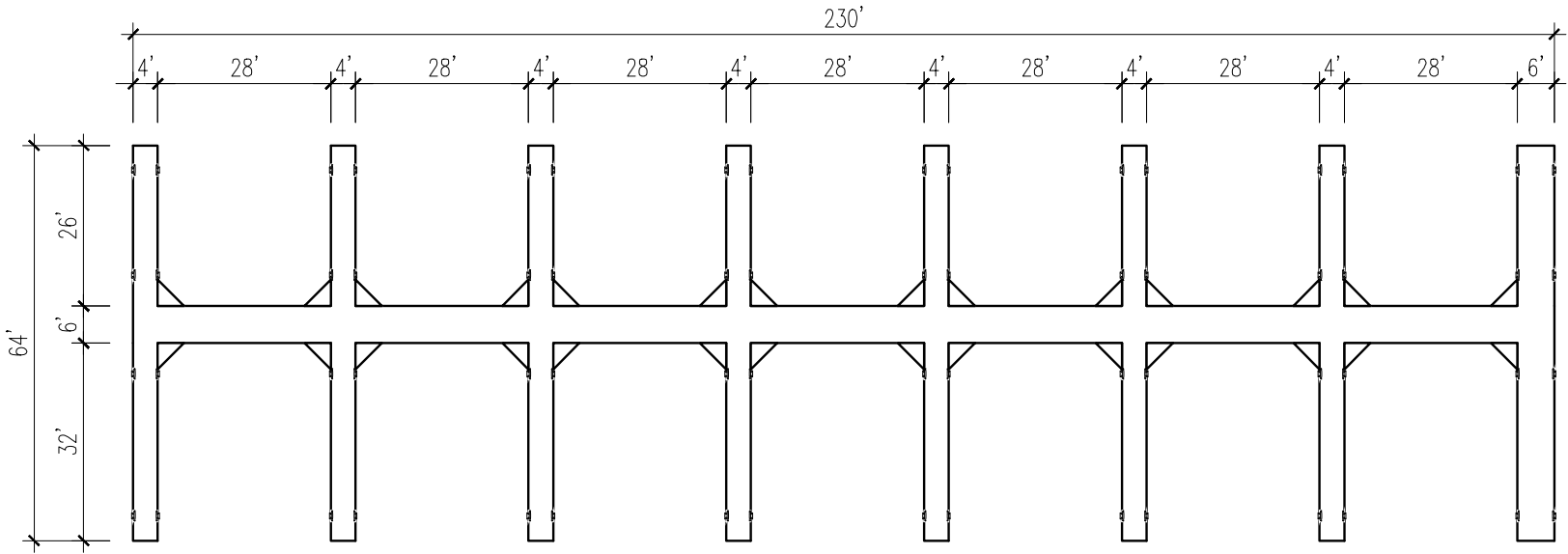
PLAN VIEW - DOCK F
(28) 36' x 15' OPEN SLIPS

NOTES:

1. 9" GLU-LAM NEPTUNE BEAM.
2. POLYETHYLENE FLOAT WITH POLYSTYRENE FLOTATION MOLDED INSIDE. (NOMINAL .150" WALL)
3. PILE ANCHORAGE - PILES BY OTHERS, BRACKETS BY MEECO SULLIVAN.
4. ALL STEEL COMPONENTS TO BE HOT-DIP GALVANIZED AFTER FABRICATION.
5. DECKING
HEADPIERS & FINGERS:
GREY CONCRETE DECK PANELS WITH EMBOSSED FINISH.
CORNERWALKS:
2"x6" TREATED SOUTHERN YELLOW PINE.
2"x6" COMPOSITE DECKING.
6. SINGLE ROW 2"x6" TREATED SYP SIDEWOOD PERIMETER.
7. #5001 VINYL BUMPER PERIMETER OF DOCK. (BLACK)
8. 10" GALVANIZED DECK CLEATS ON SLIPS UNDER 50'.
12" GALVANIZED DECK CLEATS ON SLIPS 50'+.
9. TOE RAILS - 2"x8" SIDEWOOD INSTALLED WITH TOP EDGE 2" ABOVE DECK LEVEL.
9. TOE RAILS - DOUBLE 2"x6" COMPOSITE DECK BOARDS.
10. DECK FLOTATION LIVELOAD - ~30 P.S.F.

NO.	REVISION DESCRIPTION	BY	DATE	Note: This document contains proprietary information of MS-TMC, . Its receipt or possession does not convey any rights to reproduce, disclose its contents, or to manufacture, use, or sell anything it may describe. Reproduction, disclosure, or use, without specific written authorization is strictly forbidden.	<div><div></div><div>1501 E. ELECTRIC AVE. McALESTER, OKLAHOMA, USA 74501</div><div>Phone: (918) 423-6833 Fax: (918) 423-3215</div></div>	DRAWN BY: W.M.S.	FILE NAME: 8357AA-ALLDocks	NOYO HARBOR MARINA NOYO, CA
						CHECKED BY:	JOB #	PLAN # 8357AA
						SCALE: 1"=30'-0"	DATE: 12/20/17	SHEET F

\\AMIFS\Drafting_files\ARCHIVE\8300\8357AA -Noyo Harbor\8357AA-ALLDocks.dwg, G. 12/20/2017 4:49:44 PM, MShrader



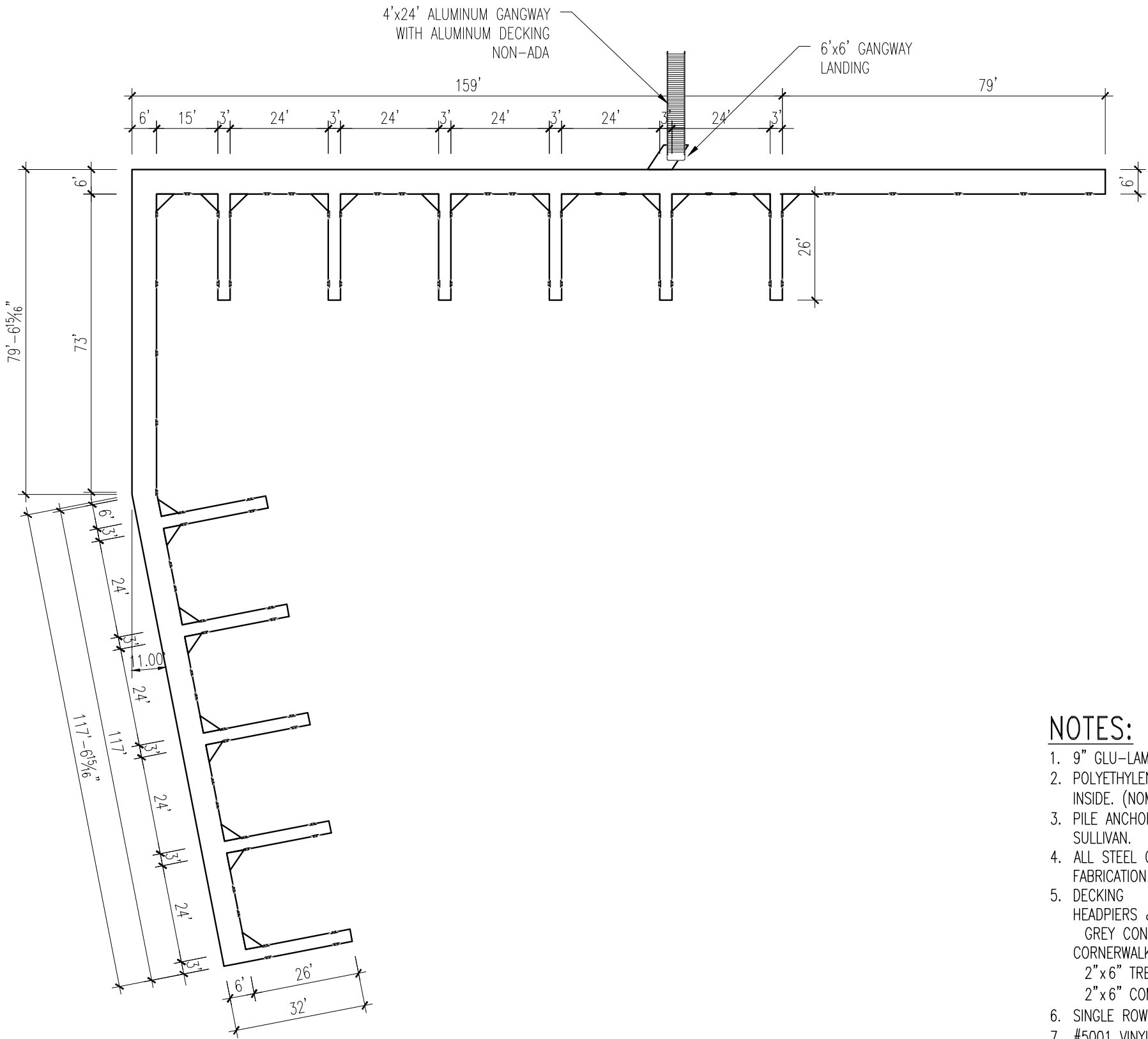
PLAN VIEW - DOCK G
(28) 26' x 14' OPEN SLIPS

NOTES:

1. 9" GLU-LAM NEPTUNE BEAM.
2. POLYETHYLENE FLOAT WITH POLYSTYRENE FLOTATION MOLDED INSIDE. (NOMINAL .150" WALL)
3. PILE ANCHORAGE - PILES BY OTHERS, BRACKETS BY MEECO SULLIVAN.
4. ALL STEEL COMPONENTS TO BE HOT-DIP GALVANIZED AFTER FABRICATION.
5. DECKING
HEADPIERS & FINGERS:
GREY CONCRETE DECK PANELS WITH EMBOSSED FINISH.
CORNERWALKS:
2"x6" TREATED SOUTHERN YELLOW PINE.
2"x6" COMPOSITE DECKING.
6. SINGLE ROW 2"x6" TREATED SYP SIDEWOOD PERIMETER.
7. #5001 VINYL BUMPER PERIMETER OF DOCK. (BLACK)
8. 10" GALVANIZED DECK CLEATS ON SLIPS UNDER 50'.
12" GALVANIZED DECK CLEATS ON SLIPS 50'+.
9. TOE RAILS - 2"x8" SIDEWOOD INSTALLED WITH TOP EDGE 2" ABOVE DECK LEVEL.
9. TOE RAILS - DOUBLE 2"x6" COMPOSITE DECK BOARDS.
10. DECK FLOTATION LIVELOAD - ~30 P.S.F.

NO.	REVISION DESCRIPTION	BY	DATE	Note: This document contains proprietary information of MS-TMC, . Its receipt or possession does not convey any rights to reproduce, disclose its contents, or to manufacture, use, or sell anything it may describe. Reproduction, disclosure, or use, without specific written authorization is strictly forbidden.	<div><div>1501 E. ELECTRIC AVE. McALESTER, OKLAHOMA, USA 74501</div><div>Phone: (918) 423-6833 Fax: (918) 423-3215</div></div>	DRAWN BY: W.M.S.		FILE NAME: 8357AA-ALLDocks		NOYO HARBOR MARINA NOYO, CA
						CHECKED BY:		JOB #	PLAN # 8357AA	
						SCALE: 1"=30'-0"		DATE: 12/20/17	SHEET G	

\\AMIFS\Drafting_files\ARCHIVE\8300\8357AA -Noyo Harbor\8357AA-ALLDocks.dwg, H, 12/20/2017 4:49:45 PM, MShrader



PLAN VIEW - DOCK H
(24) 26' x 12' OPEN SLIPS

PREVIOUSLY DOCK I
(24) 26' x 12' OPEN SLIPS

- NOTES:
- 9" GLU-LAM NEPTUNE BEAM.
 - POLYETHYLENE FLOAT WITH POLYSTYRENE FLOTATION MOLDED INSIDE. (NOMINAL .150" WALL)
 - PILE ANCHORAGE – PILES BY OTHERS, BRACKETS BY MEECO SULLIVAN.
 - ALL STEEL COMPONENTS TO BE HOT-DIP GALVANIZED AFTER FABRICATION.
 - DECKING
HEADPIERS & FINGERS:
GREY CONCRETE DECK PANELS WITH EMBOSSED FINISH.
CORNERWALKS:
2"x6" TREATED SOUTHERN YELLOW PINE.
2"x6" COMPOSITE DECKING.
 - SINGLE ROW 2"x6" TREATED SYP SIDEWOOD PERIMETER.
 - #5001 VINYL BUMPER PERIMETER OF DOCK. (BLACK)
 - 10" GALVANIZED DECK CLEATS ON SLIPS UNDER 50'.
12" GALVANIZED DECK CLEATS ON SLIPS 50'+.
 - TOE RAILS – 2"x8" SIDEWOOD INSTALLED WITH TOP EDGE 2" ABOVE DECK LEVEL.
 - TOE RAILS – DOUBLE 2"x6" COMPOSITE DECK BOARDS.
 - DECK FLOTATION LIVELOAD – ~30 P.S.F.

NO.	REVISION DESCRIPTION	BY	DATE

Note: This document contains proprietary information of MS-TMC, . Its receipt or possession does not convey any rights to reproduce, disclose its contents, or to manufacture, use, or sell anything it may describe. Reproduction, disclosure, or use, without specific written authorization is strictly forbidden.



MEECO SULLIVAN
THE MARINA COMPANY

1501 E. ELECTRIC AVE.
McALESTER, OKLAHOMA, USA 74501

Phone: (918) 423-6833
Fax: (918) 423-3215

DRAWN BY: W.M.S.	FILE NAME: 8357AA-ALLDocks	
CHECKED BY:	JOB #	PLAN # 8357AA
SCALE: 1"=30'-0"	DATE: 12/20/17	SHEET H

NOYO HARBOR MARINA

NOYO, CA