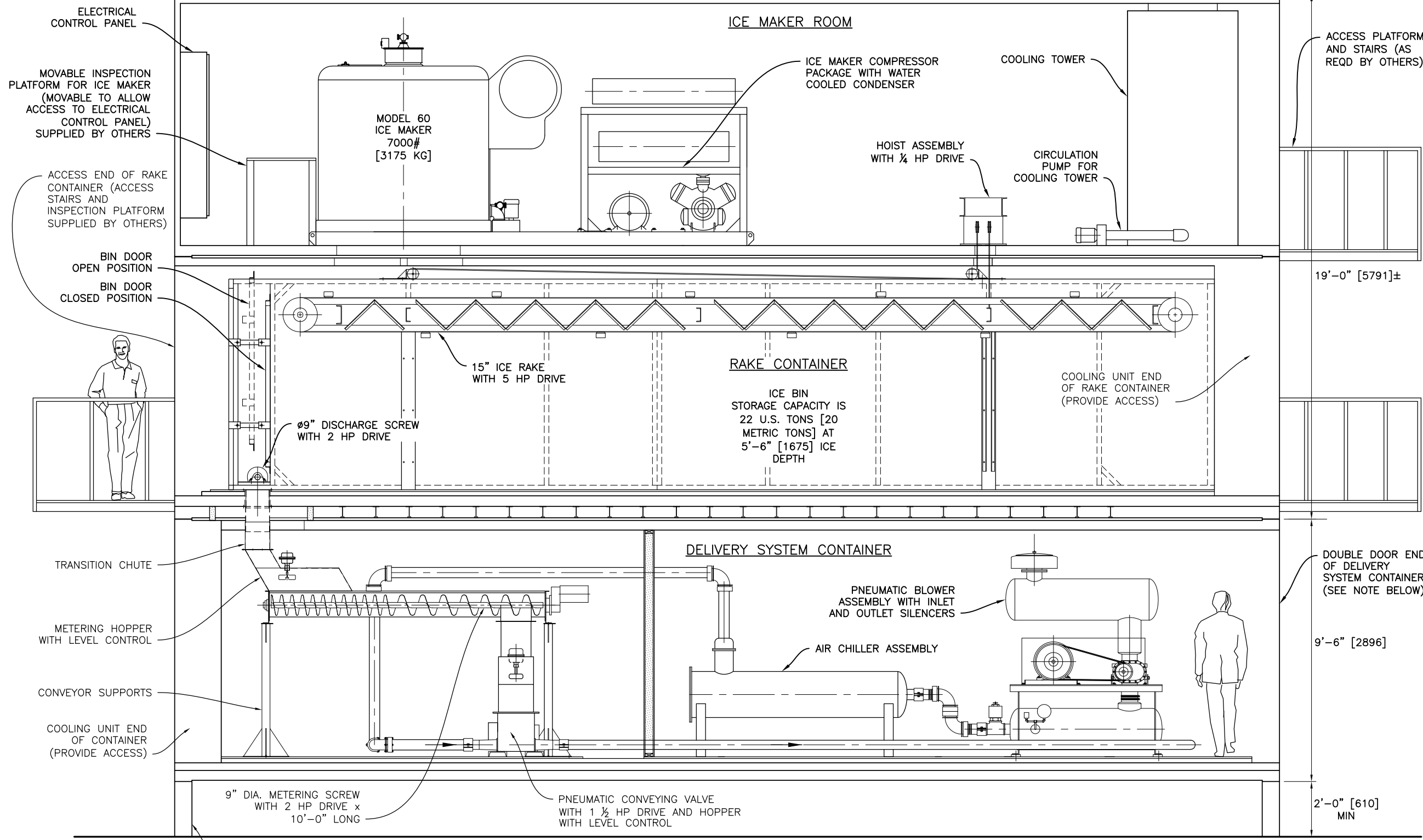


39'-11 $\frac{3}{4}$ " [12186]



LONGITUDINAL SECTION

CONTAINER SUPPORTS/FOUNDATION FOOTING AS REQD (BY OTHERS) TO ALLOW ACCESS TO UNDERSIDE OF CONTAINER

NOTE:
DELIVERY SYSTEM CONTAINER DOUBLE DOORS MUST BE KEPT IN OPEN POSITION DURING ICE DELIVERY OPERATION TO PROVIDE ADEQUATE AIR SUPPLY FOR PNEUMATIC BLOWER.

Title		CONTAINERIZED ICE PLANT WITH PNEUMATIC DELIVERY SYSTEM	
Rev.	Date	Description of Revision	
C	04-18-17	REVISED PN BLOWER ASSY/METER DRIVE/NOTES	

Drawn	Checked	Approved	Reference
-------	---------	----------	-----------

Date	18 APR. 2017		Drawing No.
------	--------------	--	-------------

Scale

North Star
ICE EQUIPMENT CORPORATION
8151 Occidental Ave. So. Seattle, WA 98108

SD94-2